

---

# FENWICK SOLAR FARM

**Fenwick Solar Farm  
EN010152**

**Works Plan**

**Document Reference: EN010152/APP/2.2**

Regulation Reg 5(2)(j)

Infrastructure Planning (Applications: Prescribed Forms and Procedure)  
Regulations 2009

October 2024  
Revision Number: 00

BOOM-POWER.CO.UK

**BOOM**  
POWER

## Revision History

<b>Revision Number</b>	<b>Date</b>	<b>Details</b>
00	October 2024	DCO application

Prepared for:  
Fenwick Solar Project Limited

Prepared by:  
AECOM Limited

© 2024 AECOM Limited. All Rights Reserved.

This document has been prepared by AECOM Limited (“AECOM”) for sole use of our client (the “Client”) in accordance with generally accepted consultancy principles, the budget for fees and the terms of reference agreed between AECOM and the Client. Any information provided by third parties and referred to herein has not been checked or verified by AECOM, unless otherwise expressly stated in the document. No third party may rely upon this document without the prior and express written agreement of AECOM.

**PROJECT**

Fenwick Solar Farm

**CLIENT**

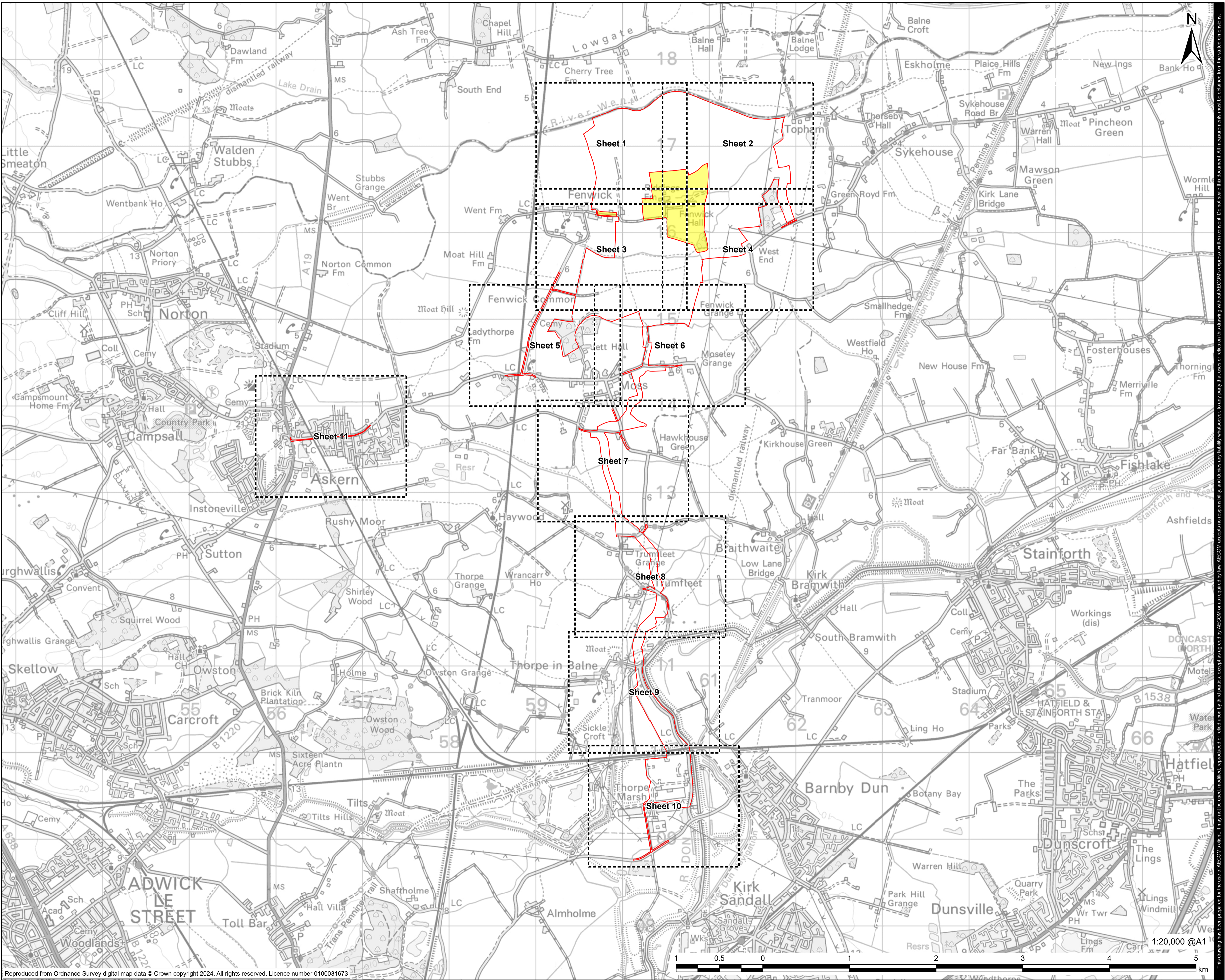
Fenwick Solar Project Limited

**CONSULTANT**

AECOM Limited  
Midpoint  
Alencon Link  
Basingstoke, RG21 7PP  
www.aecom.com

**LEGEND**

- Order limits
- Land not included in the Order limits
- Sheet Extent with Reference to Sheet Number



FOR DCO APPLICATION	CL	AK	25/09/2024	0
REVISION DETAILS	BY	CHECK	DATE	REV

**ISSUE PURPOSE**

DCO Application

**PROJECT NUMBER**

60698207

**PLAN TITLE**

Works Plan Sheet Extents

**REFERENCE NUMBER**

EN010152/APP/2.2

**LEGISLATION REFERENCE**

APFP 2009 Regulation 5(2)(j)

This drawing has been prepared for the use of AECOM's client. It may not be used, modified, reproduced or relied upon by third parties, except as required by law. AECOM accepts no responsibility, and denies any liability whatsoever, to any party that uses or relies on this drawing without AECOM's express written consent. Do not scale this document. All measurements must be obtained from the stated dimensions.



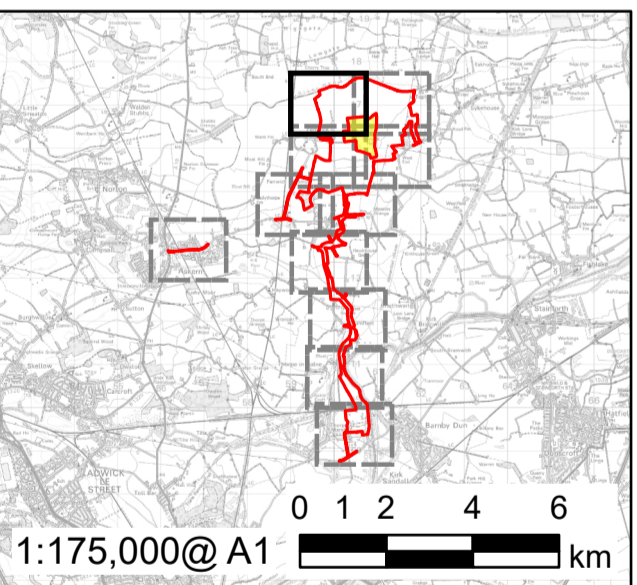
**PROJECT**  
Fenwick Solar Farm

**CLIENT**  
Fenwick Solar Project Limited

**CONSULTANT**  
AECOM Limited  
Midpoint  
Alencon Link  
Basingstoke, RG21 7PP  
www.aecom.com

**LEGEND**

- Order limits
- Land not included in the Order limits
- Work No. 1
- Work No. 5
- Work No. 6
- Work No. 9



FOR DCO APPLICATION	CL	AK	10/10/2024	0
REVISION DETAILS	BY	CHECK	DATE	REV

**ISSUE PURPOSE**  
DCO Application

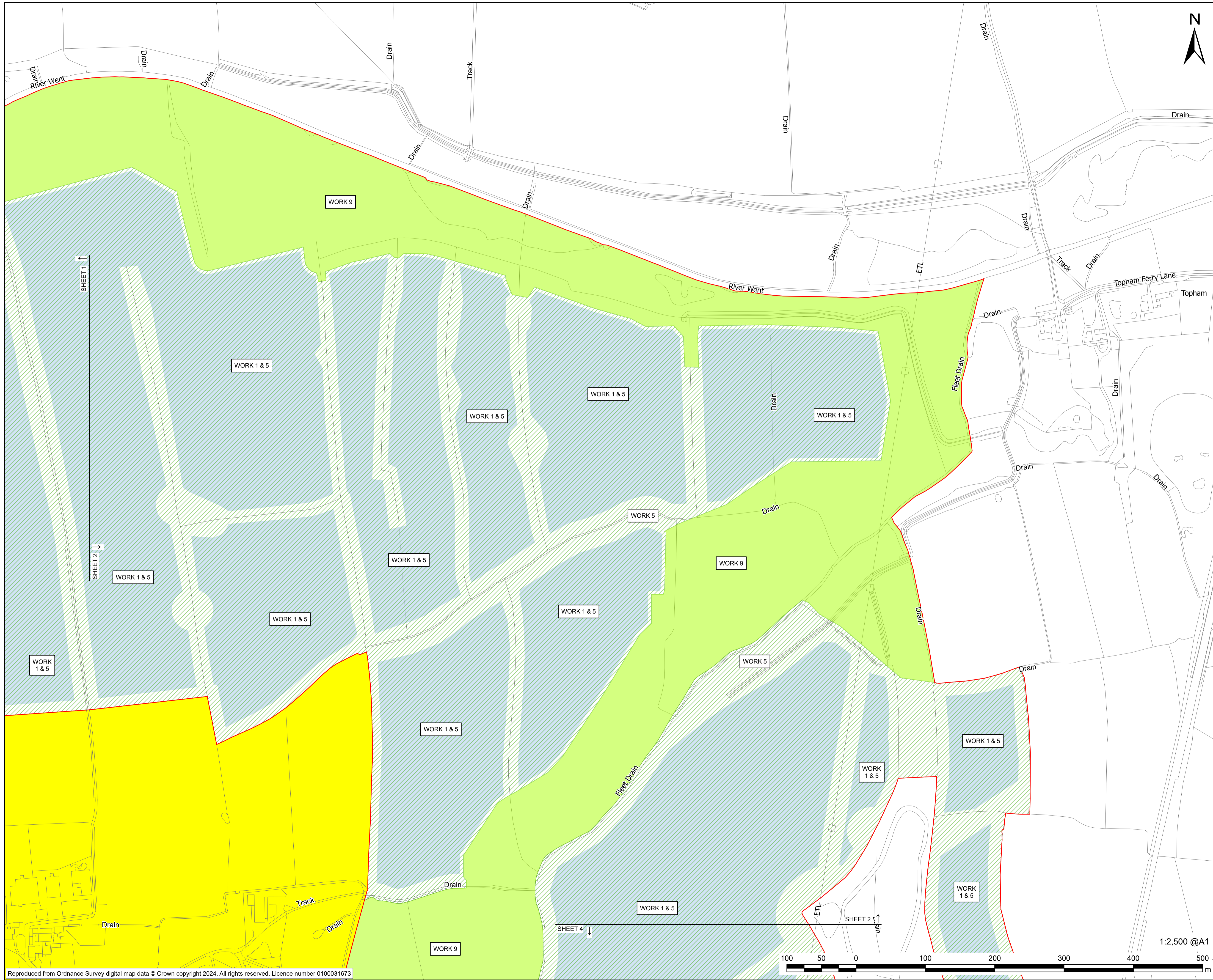
**PROJECT NUMBER**  
60698207

**PLAN TITLE**  
Works Plan - Sheet 1 of 11

**REFERENCE NUMBER**  
EN10152/APP/2.2

**LEGISLATION REFERENCE**  
APFP 2009 Regulation 5(2)(j)

This drawing has been prepared for the use of AECOM's client. It may not be used, modified, reproduced or relied upon by third parties, except as agreed by AECOM, or as required by law. AECOM accepts no responsibility, and denies any liability whatsoever, to any party that uses or relies on this drawing without AECOM's express written consent. Do not scale this document. All measurements must be obtained from the stated dimensions.

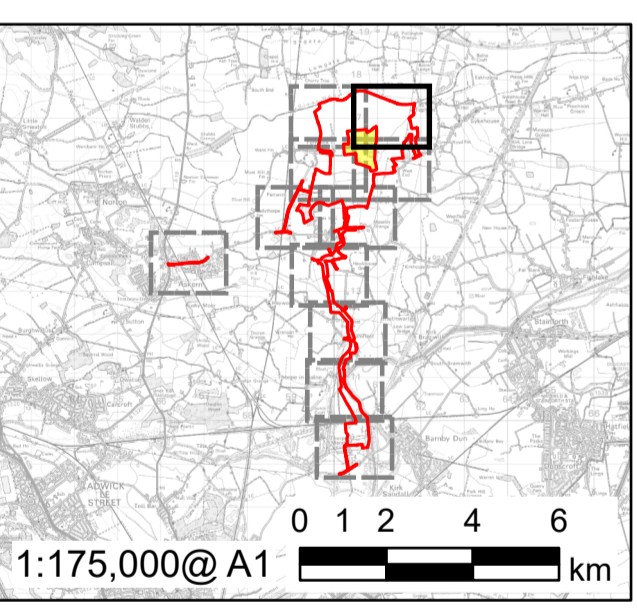


**PROJECT**  
Fenwick Solar Farm

**CLIENT**  
Fenwick Solar Project Limited

**CONSULTANT**  
AECOM Limited  
Midpoint  
Alencon Link  
Basingstoke, RG21 7PP  
www.aecom.com

- LEGEND**
- Order limits
  - Land not included in the Order limits
  - Work No. 1
  - Work No. 5
  - Work No. 9



FOR DCO APPLICATION				
CL	AK	DATE	REV	
		10/10/2024	0	

**ISSUE PURPOSE**

DCO Application

**PROJECT NUMBER**

60698207

**PLAN TITLE**

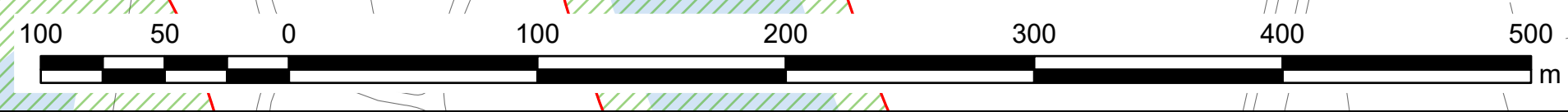
Works Plan - Sheet 2 of 11

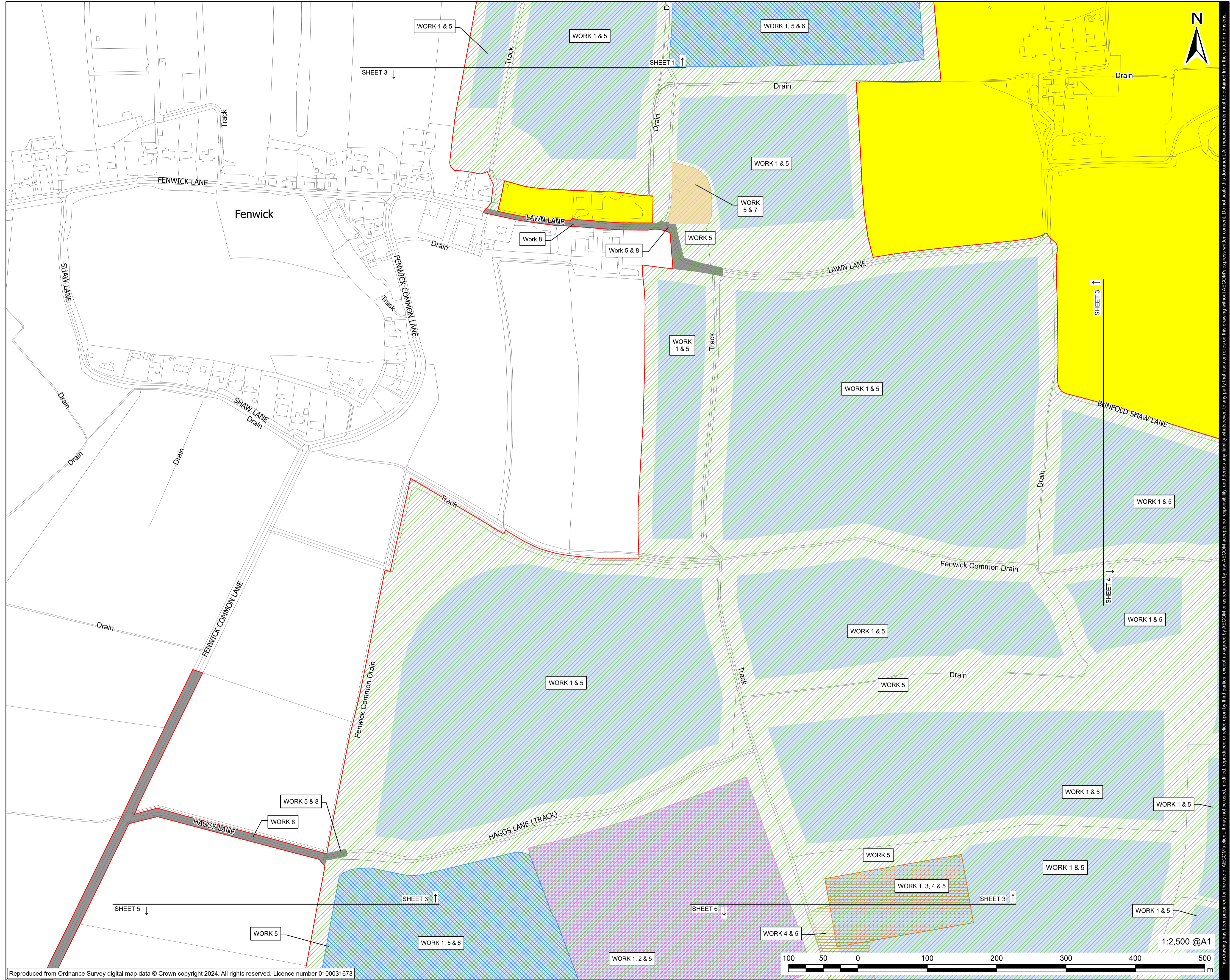
**REFERENCE NUMBER**

EN10152/APP/2.2

**LEGISLATION REFERENCE**

APFP 2009 Regulation 5(2)(j)





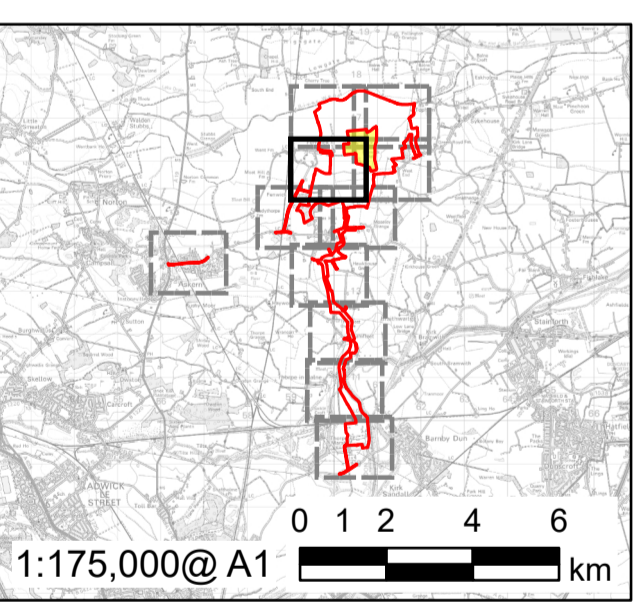
**PROJECT**  
Fenwick Solar Farm

**CLIENT**  
Fenwick Solar Project Limited

**CONSULTANT**  
AECOM Limited  
Midpoint  
Alencon Link  
Basingstoke, RG21 7PP  
www.aecom.com

**LEGEND**

- Order limits
- Land not included in the Order limits
- Work No. 1
- Work No. 2
- Work No. 3
- Work No. 4
- Work No. 5
- Work No. 6
- Work No. 7
- Work No. 8



FOR DCO APPLICATION	CL	AK	10/10/2024	0
REVISION DETAILS	BY	CHECK	DATE	REV

**ISSUE PURPOSE**  
DCO Application

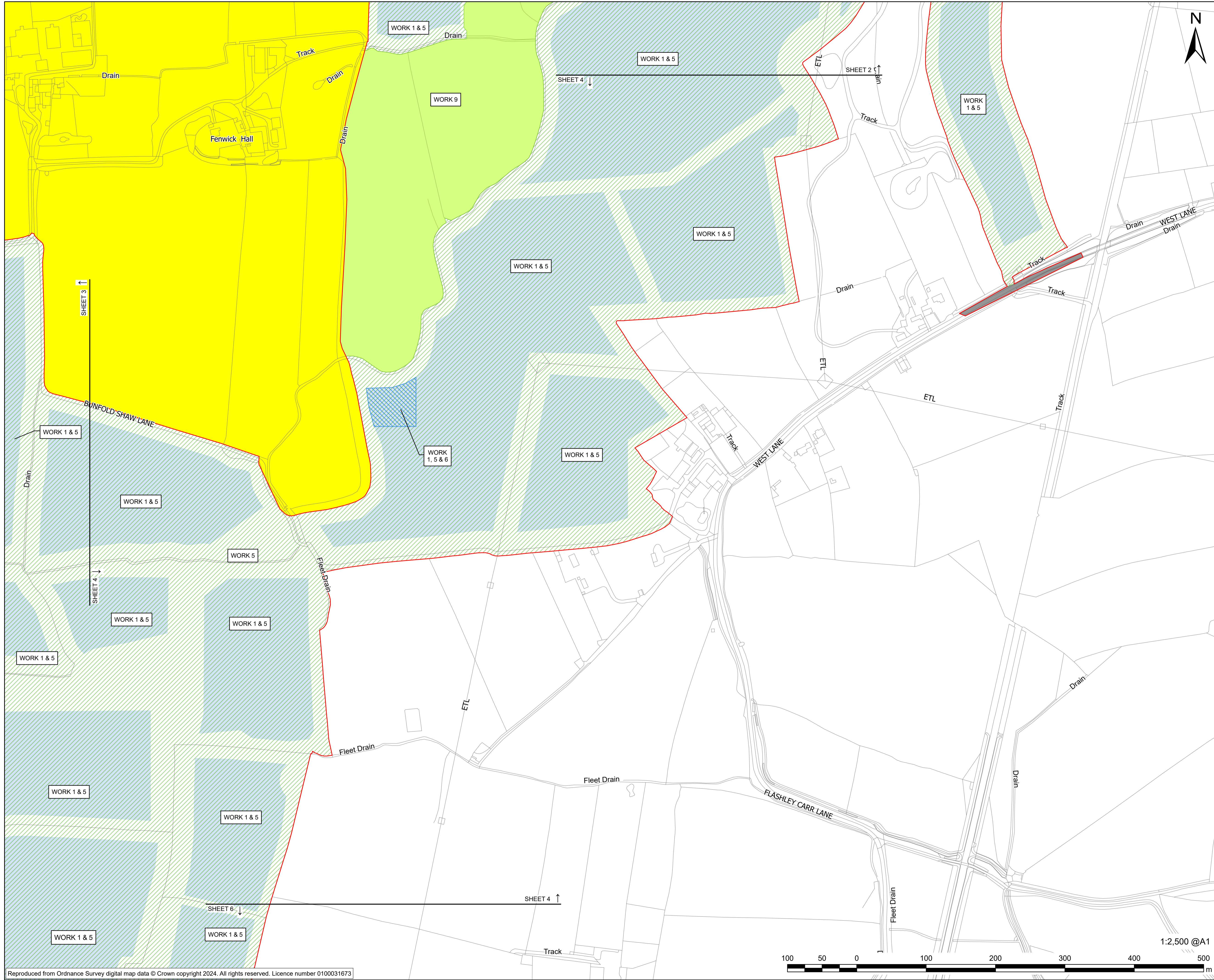
**PROJECT NUMBER**  
60698207

**PLAN TITLE**  
Works Plan - Sheet 3 of 11

**REFERENCE NUMBER**  
EN10152/APP/2.2

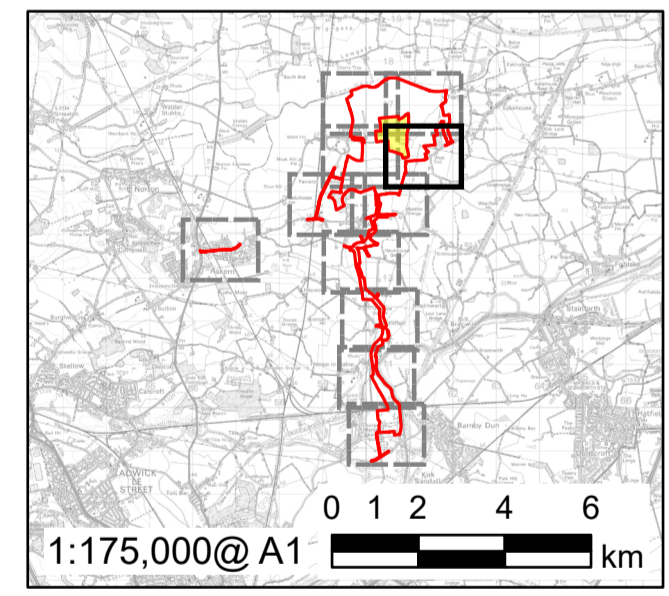
**LEGISLATION REFERENCE**  
APFP 2009 Regulation 5(2)(j)

This drawing has been prepared for the use of AECOM's client. It may not be used, modified, reproduced or relied upon by third parties, except as agreed by AECOM or as required by law. AECOM accepts no responsibility, and denies any liability whatsoever, to any party that uses or relies on this drawing without AECOM's express written consent. Do not scale this document. All measurements must be obtained from the stated dimensions.



**LEGEND**

- Order limits
- Land not included in the Order limits
- Work No. 1
- Work No. 5
- Work No. 6
- Work No. 8
- Work No. 9



FOR DCO APPLICATION	CL	AK	10/10/2024	0
REVISION DETAILS	BY	CHECK	DATE	REV

**ISSUE PURPOSE**

DCO Application

**PROJECT NUMBER**

60698207

**PLAN TITLE**

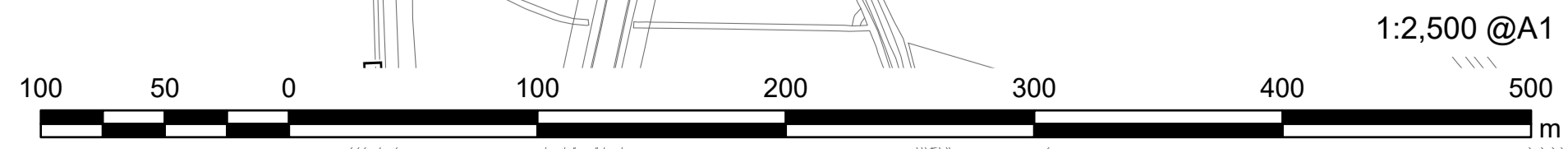
Works Plan - Sheet 4 of 11

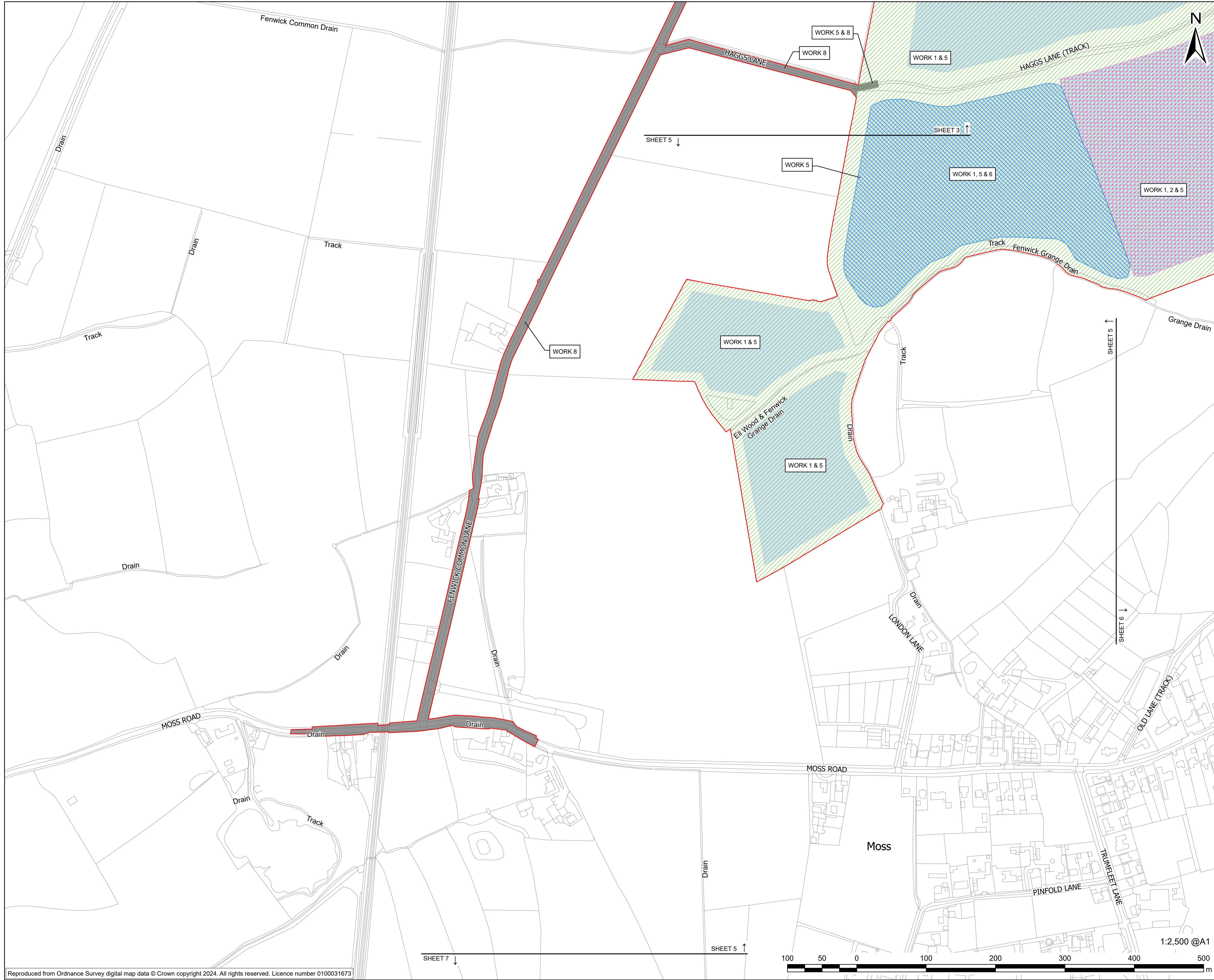
**REFERENCE NUMBER**

EN10152/APP/2.2

**LEGISLATION REFERENCE**

APFP 2009 Regulation 5(2)(j)





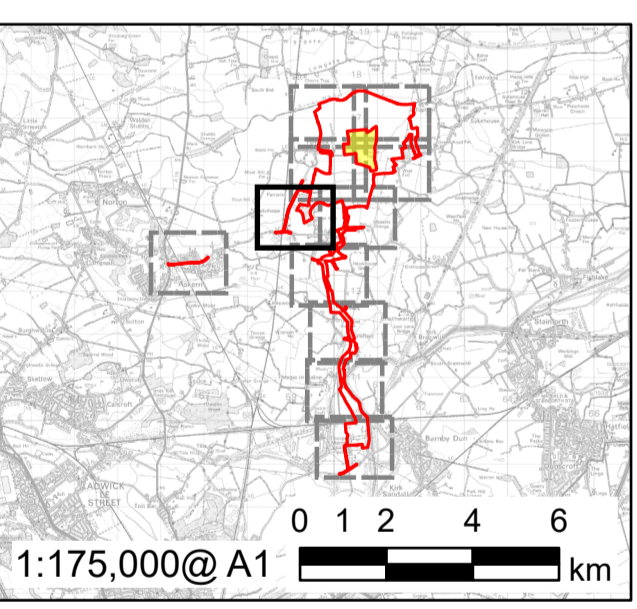
**PROJECT**  
Fenwick Solar Farm

**CLIENT**  
Fenwick Solar Project Limited

**CONSULTANT**  
AECOM Limited  
Midpoint  
Alencon Link  
Basingstoke, RG21 7PP  
www.aecom.com

**LEGEND**

- Order limits
- Land not included in the Order limits
- Work No. 1
- Work No. 2
- Work No. 5
- Work No. 6
- Work No. 8



FOR DCO APPLICATION				
CL	AK	DATE	REV	
		10/10/2024	0	
REVISION DETAILS				
BY	CHECK	DATE	REV	

**ISSUE PURPOSE**  
DCO Application

**PROJECT NUMBER**  
60698207

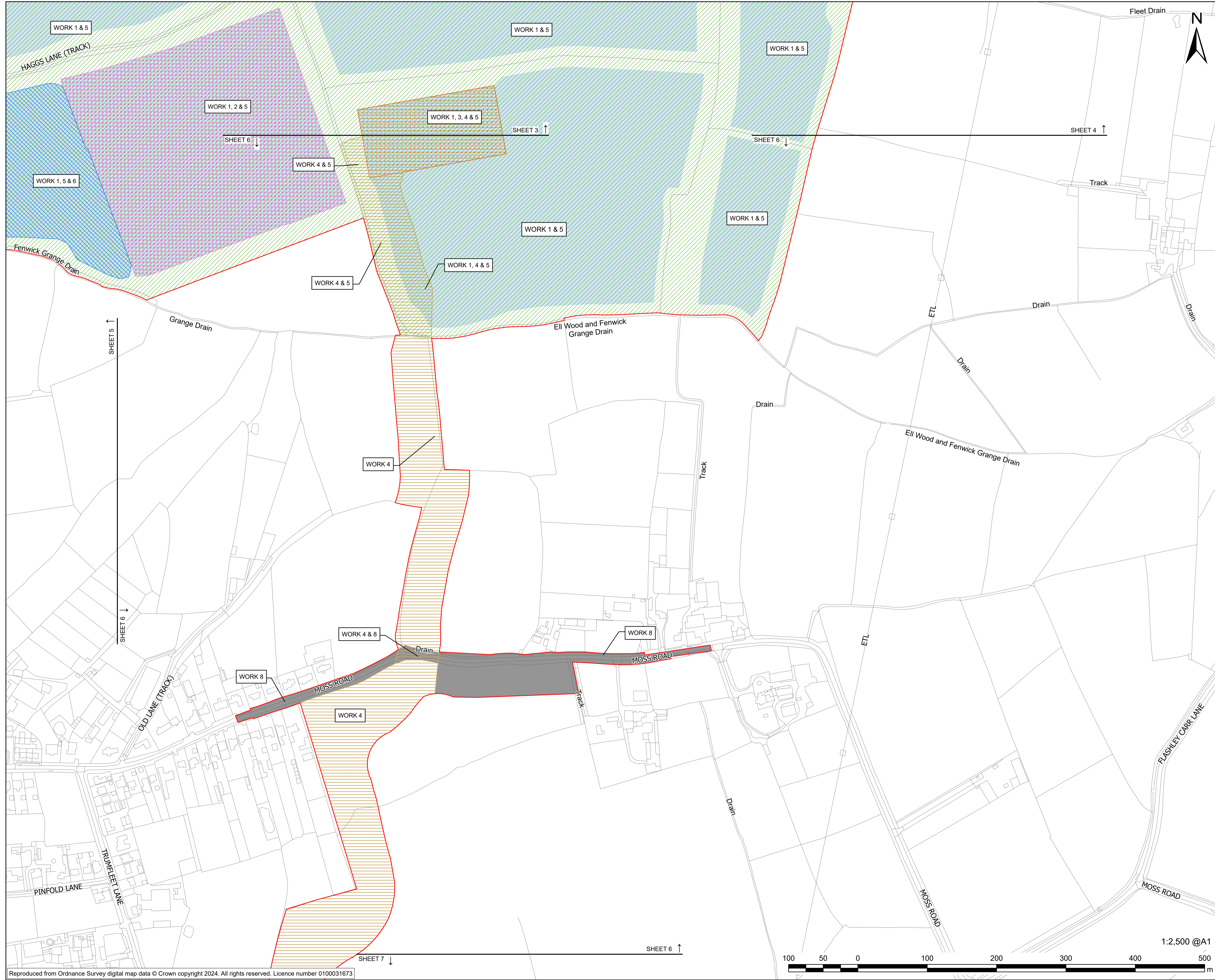
**PLAN TITLE**  
Works Plan - Sheet 5 of 11

**REFERENCE NUMBER**  
EN10152/APP/2.2

**LEGISLATION REFERENCE**  
APFP 2009 Regulation 5(2)(j)

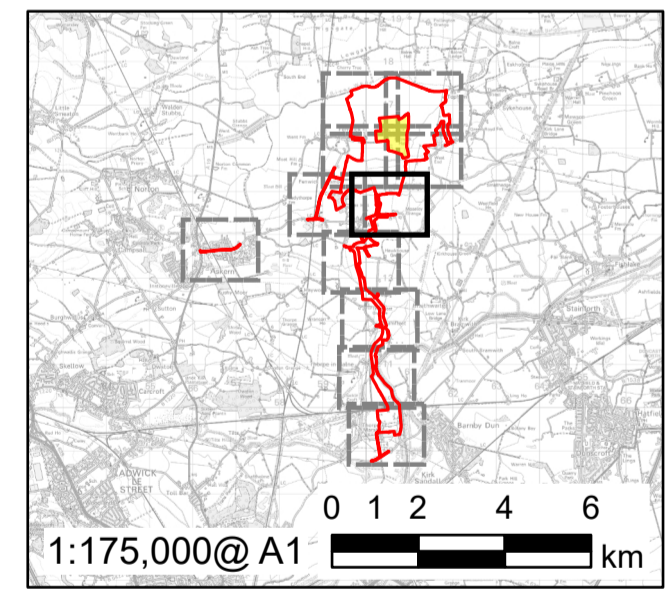
This drawing has been prepared for the use of AECOM's client. It may not be used, modified, reproduced or relied upon by third parties, except as agreed by AECOM or as required by AECOM, and AECOM accepts no responsibility, and denies any liability whatsoever, to any party that uses or relies on this drawing without AECOM's express written consent. Do not scale this document. All measurements must be obtained from the stated dimensions.





**LEGEND**

- Order limits
- Land not included in the Order limits
- Work No. 1
- Work No. 2
- Work No. 3
- Work No. 4
- Work No. 5
- Work No. 6
- Work No. 8



FOR DCO APPLICATION	CL	AK	10/10/2024	0
REVISION DETAILS	BY	CHECK	DATE	REV

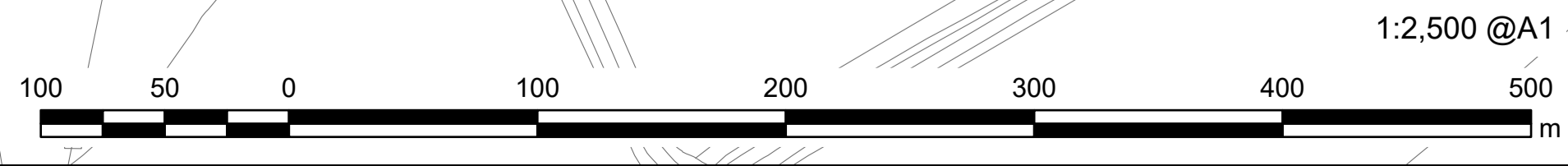
**ISSUE PURPOSE**  
DCO Application

**PROJECT NUMBER**  
60698207

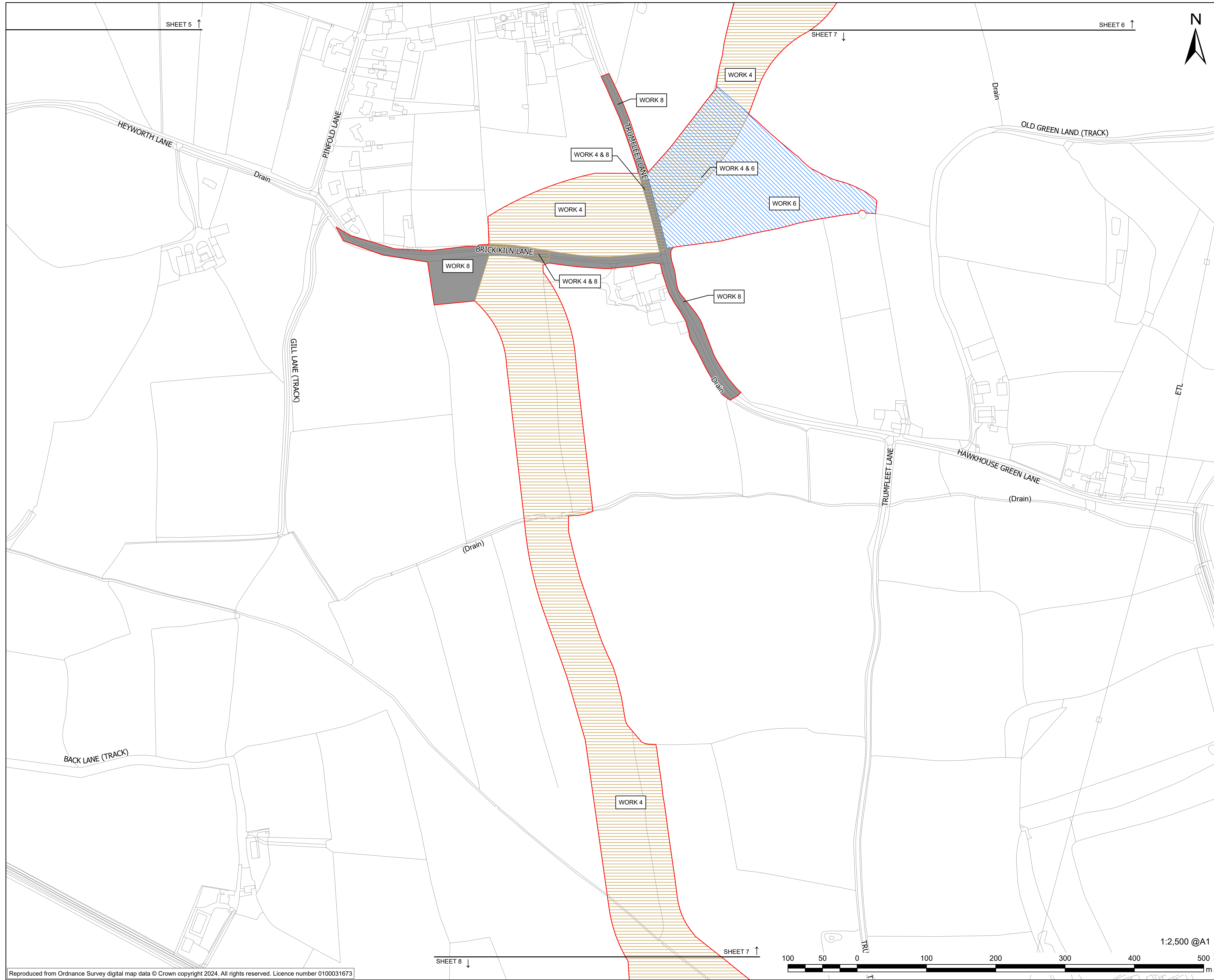
**PLAN TITLE**  
Works Plan - Sheet 6 of 11

**REFERENCE NUMBER**  
EN10152/APP/2.2

**LEGISLATION REFERENCE**  
APFP 2009 Regulation 5(2)(j)



This drawing has been prepared for the use of AECOM's client. It may not be used, modified, reproduced or relied upon by third parties, except as agreed by AECOM or as required by AECOM. AECOM accepts no responsibility, and denies any liability whatsoever, to any party that uses or relies on this drawing without AECOM's express written consent. Do not scale this document. All measurements must be obtained from the stated dimensions.



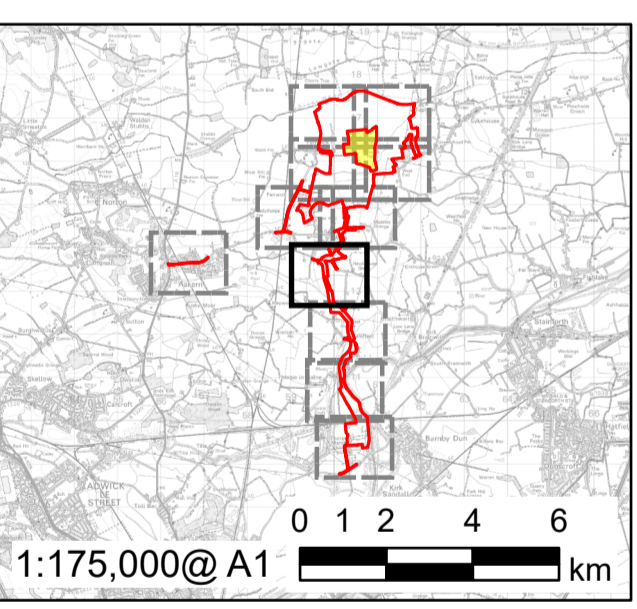
**PROJECT**  
Fenwick Solar Farm

**CLIENT**  
Fenwick Solar Project Limited

**CONSULTANT**  
AECOM Limited  
Midpoint  
Alencon Link  
Basingstoke, RG21 7PP  
www.aecom.com

**LEGEND**

- Order limits
- Land not included in the Order limits
- Work No. 4
- Work No. 6
- Work No. 8



FOR DCO APPLICATION			
CL	AK	DATE	REV
		10/10/2024	0
REVISION DETAILS			
BY	CHECK	DATE	REV

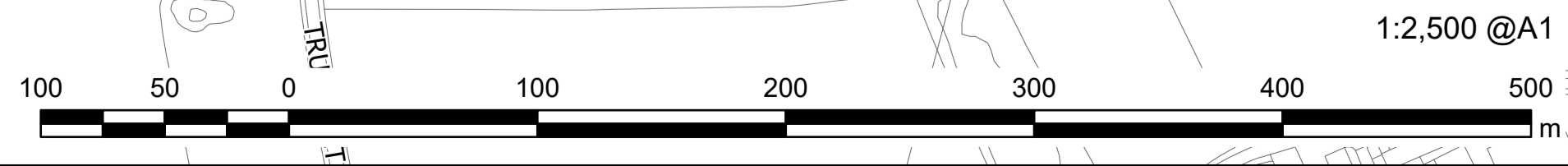
**ISSUE PURPOSE**  
DCO Application

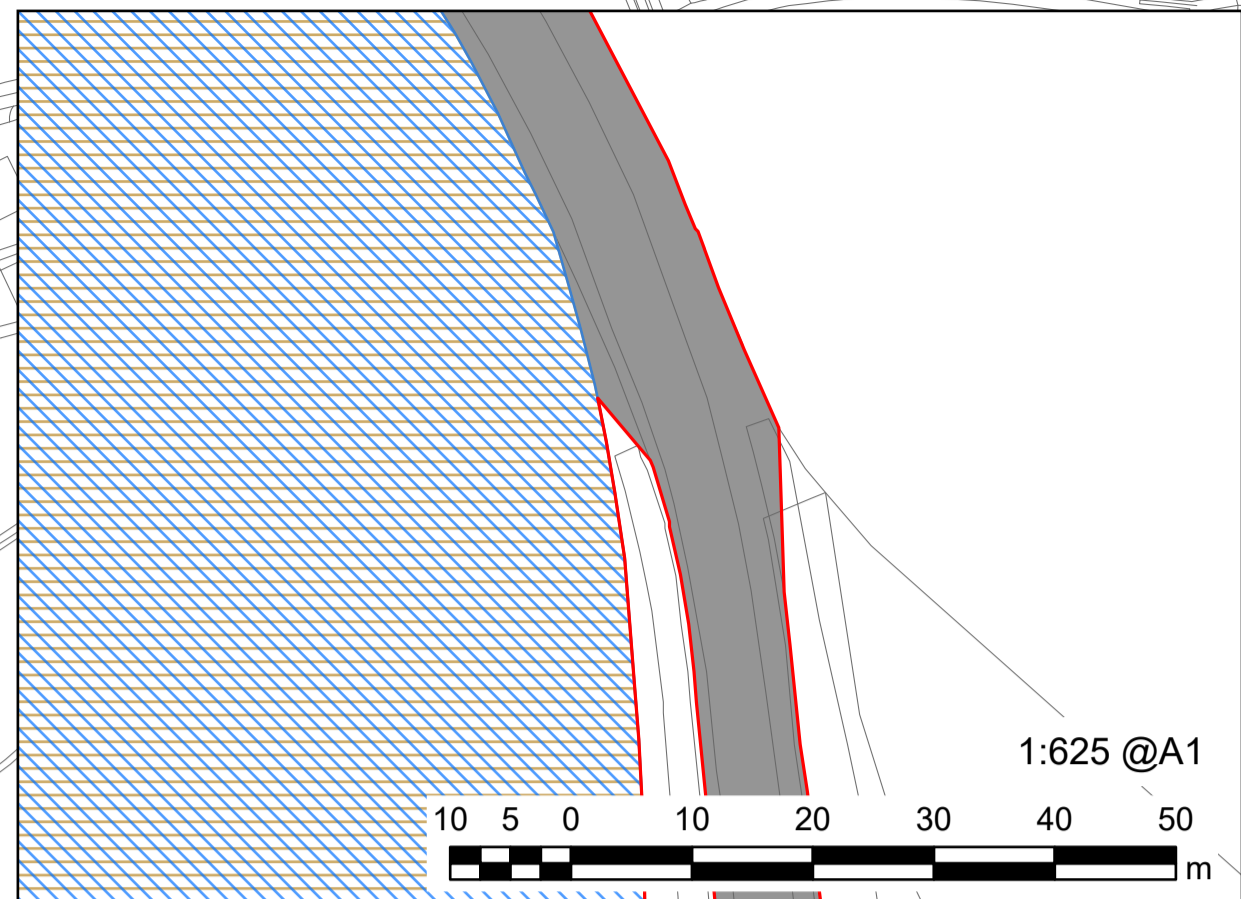
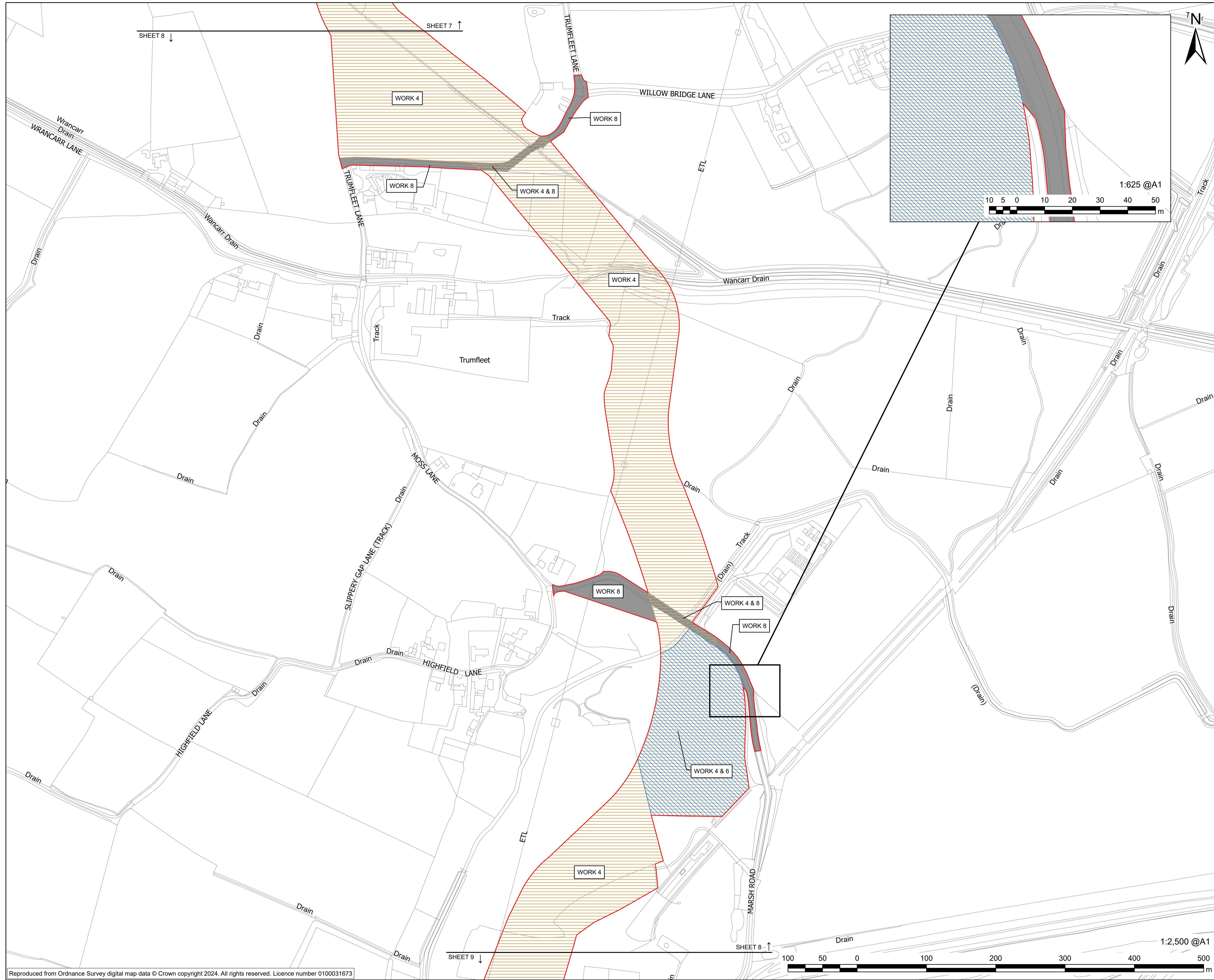
**PROJECT NUMBER**  
60698207

**PLAN TITLE**  
Works Plan - Sheet 7 of 11

**REFERENCE NUMBER**  
EN010152/APP/2.2

**LEGISLATION REFERENCE**  
APFP 2009 Regulation 5(2)(j)



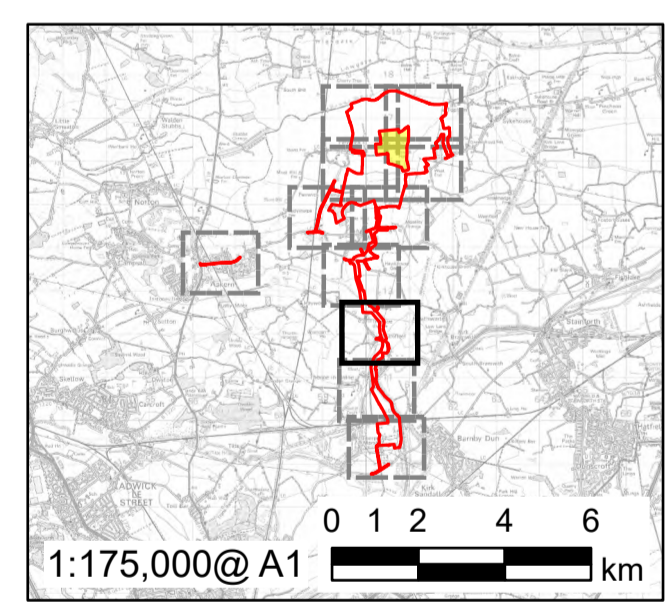


**PROJECT**  
Fenwick Solar Farm

**CLIENT**  
Fenwick Solar Project Limited

**CONSULTANT**  
AECOM Limited  
Midpoint  
Alencon Link  
Basingstoke, RG21 7PP  
www.aecom.com

- LEGEND**
- Order limits
  - Land not included in the Order limits
  - Work No. 4
  - Work No. 6
  - Work No. 8



FOR DCO APPLICATION				
CL	AK	DATE	REV	
		10/10/2024	0	
REVISION DETAILS				
BY	CHECK	DATE	REV	

**ISSUE PURPOSE**  
DCO Application

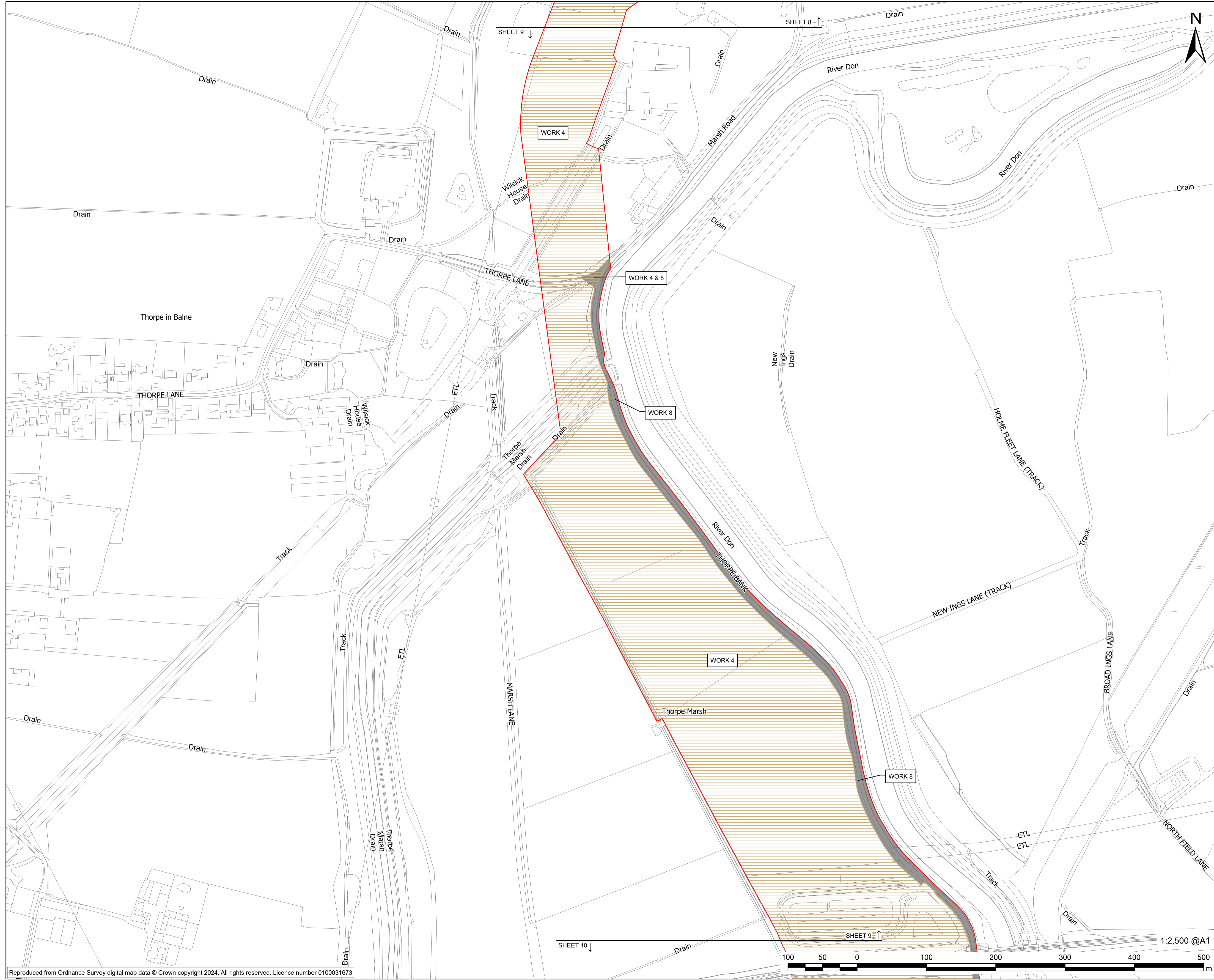
**PROJECT NUMBER**  
60698207

**PLAN TITLE**  
Works Plan - Sheet 8 of 11

**REFERENCE NUMBER**  
EN010152/APP/2.2

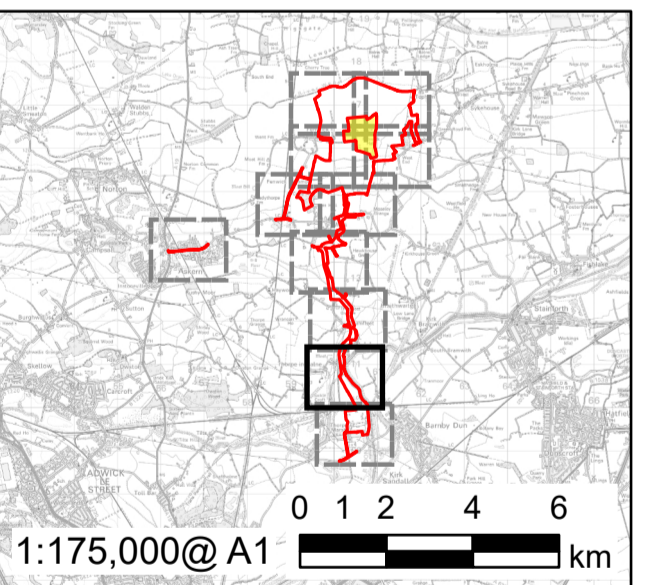
**LEGISLATION REFERENCE**  
APFP 2009 Regulation 5(2)(j)

This drawing has been prepared for the use of AECOM's client. It may not be used, modified, reproduced or relied upon by third parties, except as agreed by AECOM or as required by AECOM or as required by law. AECOM accepts no responsibility, and denies any liability whatsoever, to any party that uses or relies on this drawing without AECOM's express written consent. Do not scale this document. All measurements must be obtained from the stated dimensions.



**LEGEND**

- Order limits
- Land not included in the Order limits
- Work No. 4
- Work No. 8



FOR DCO APPLICATION			
CL	AK	DATE	REV
		10/10/2024	0
REVISION DETAILS			
BY	CHECK	DATE	REV

**ISSUE PURPOSE**

DCO Application

**PROJECT NUMBER**

60698207

**PLAN TITLE**

Works Plan - Sheet 9 of 11

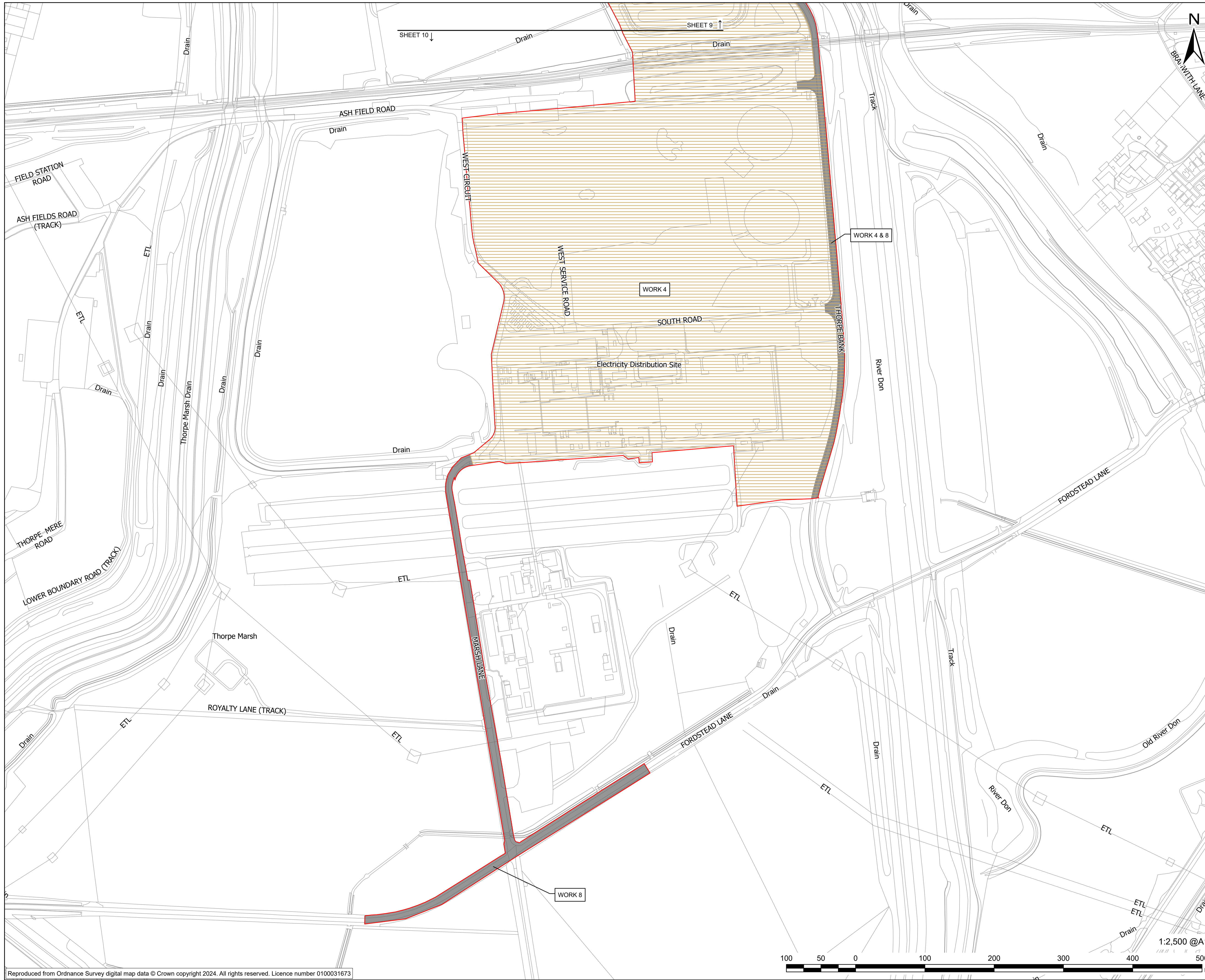
**REFERENCE NUMBER**

EN10152/APP/2.2

**LEGISLATION REFERENCE**

APFP 2009 Regulation 5(2)(j)

This drawing has been prepared for the use of AECOM's client. It may not be used, modified, reproduced or relied upon by third parties, except as agreed by AECOM or as required by AECOM, and AECOM accepts no responsibility, and denies any liability whatsoever, to any party that uses or relies on this drawing without AECOM's express written consent. Do not scale this document. All measurements must be obtained from the stated dimensions.

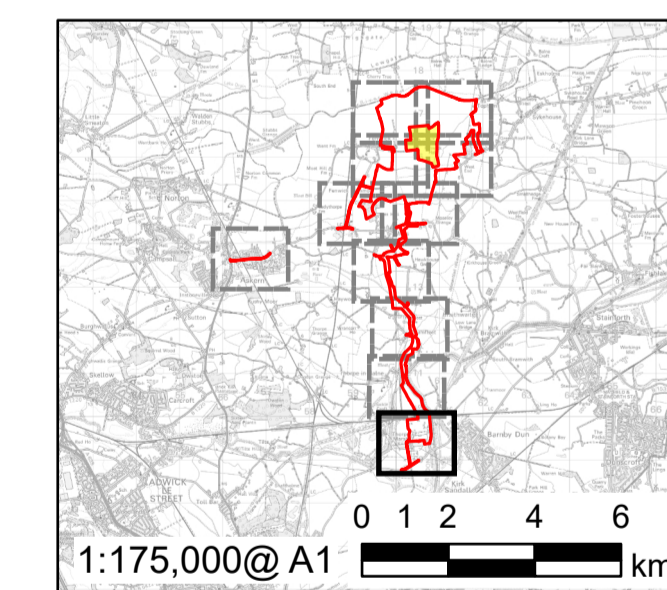


**PROJECT**  
Fenwick Solar Farm

**CLIENT**  
Fenwick Solar Project Limited

**CONSULTANT**  
AECOM Limited  
Midpoint  
Alencon Link  
Basingstoke, RG21 7PP  
www.aecom.com

- LEGEND**
- Order limits
  - Land not included in the Order limits
  - Work No. 4
  - Work No. 8



FOR DCO APPLICATION				
CL	AK	DATE	REV	
		10/10/2024	0	
REVISION DETAILS				
BY	CHECK	DATE	REV	

**ISSUE PURPOSE**

DCO Application

**PROJECT NUMBER**

60698207

**PLAN TITLE**

Works Plan - Sheet 10 of 11

**REFERENCE NUMBER**

EN10152/APP/2.2

**LEGISLATION REFERENCE**

APFP 2009 Regulation 5(2)(j)



1:2,500 @A1

This drawing has been prepared for the use of AECOM's client. It may not be used, modified, reproduced or relied upon by third parties, except as agreed by AECOM or as required by law. AECOM accepts no responsibility, and denies any liability whatsoever, to any party that uses or relies on this drawing without AECOM's express written consent. Do not scale this document. All measurements must be obtained from the stated dimensions.



**AECOM**

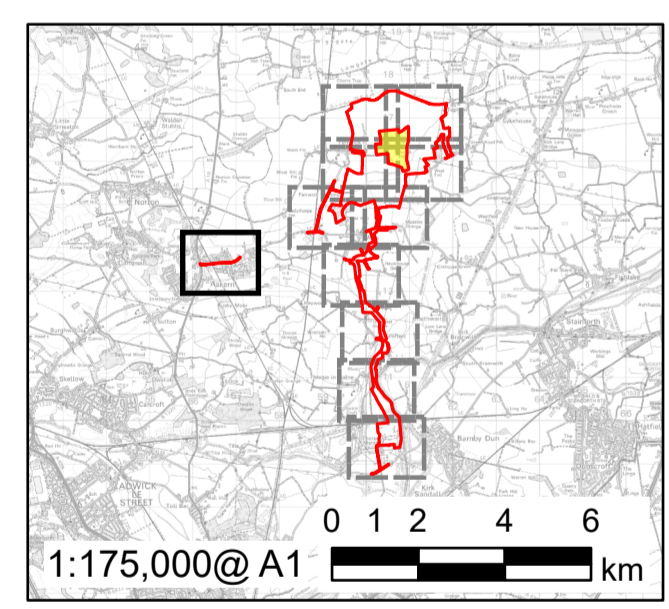
**PROJECT**  
Fenwick Solar Farm

**CLIENT**  
Fenwick Solar Project Limited

**CONSULTANT**  
AECOM Limited  
Midpoint  
Alencon Link  
Basingstoke, RG21 7PP  
www.aecom.com

**LEGEND**

- Order limits
- Land not included in the Order limits
- Work No. 8



FOR DCO APPLICATION	CL	AK	10/10/2024	0
REVISION DETAILS	BY	CHECK	DATE	REV

**ISSUE PURPOSE**  
DCO Application

**PROJECT NUMBER**  
60698207

**PLAN TITLE**  
Works Plan - Sheet 11 of 11

**REFERENCE NUMBER**  
EN010152/APP/2.2

**LEGISLATION REFERENCE**  
APFP 2009 Regulation 5(2)(j)

This drawing has been prepared for the use of AECOM's client. It may not be used, modified, reproduced or relied upon by third parties, except as agreed by AECOM or as required by law. AECOM accepts no responsibility, and denies any liability whatsoever, to any party that uses or relies on this drawing without AECOM's express written consent. Do not scale this document. All measurements must be obtained from the stated dimensions.